

Inspur Rental LED Screen

Indoor Models: P1.9 / P2.6 / P2.9 / P3.9

Outdoor Models: P2.9 / P3.9



> Lightweight Box for Easy Installation



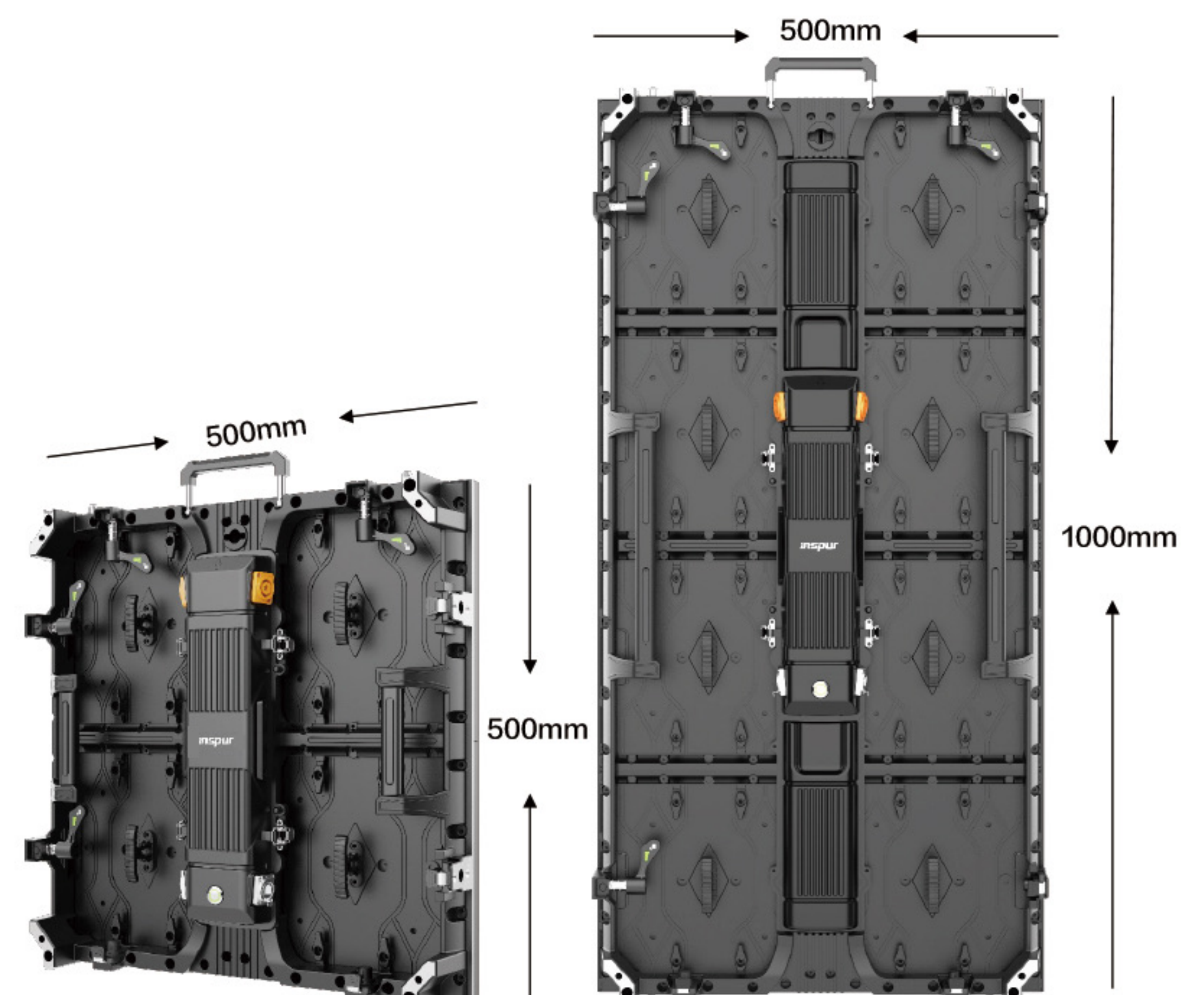
500*500mm / 500*1000mm dual-size cabinet
Support for right-angle and curved installations



Box thickness \leq 81.5mm; weight \leq 6.5kg/12kg
Easily handled by a single person

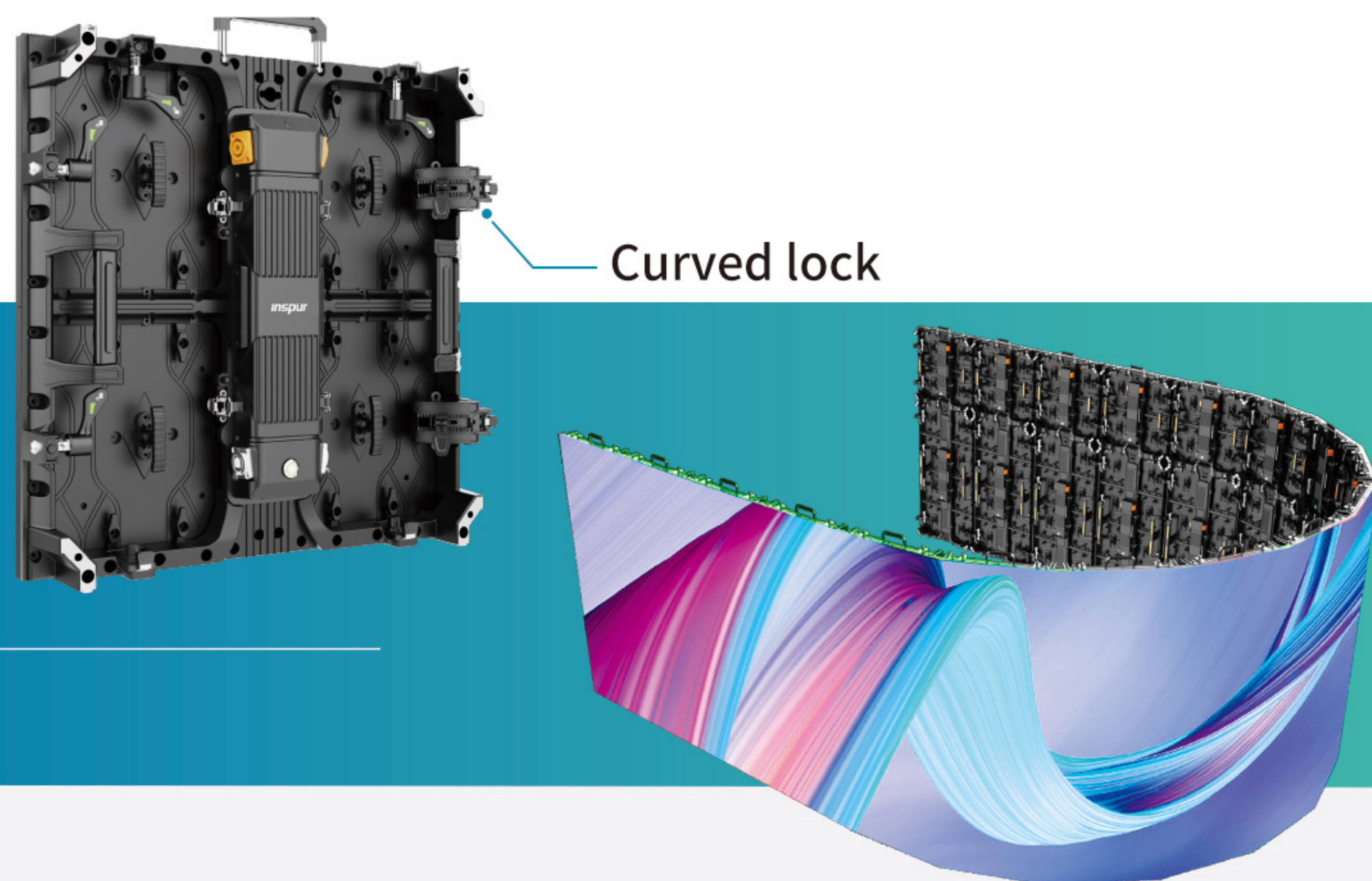


Bi-directional quick-lock design
Easy assembly and disassembly

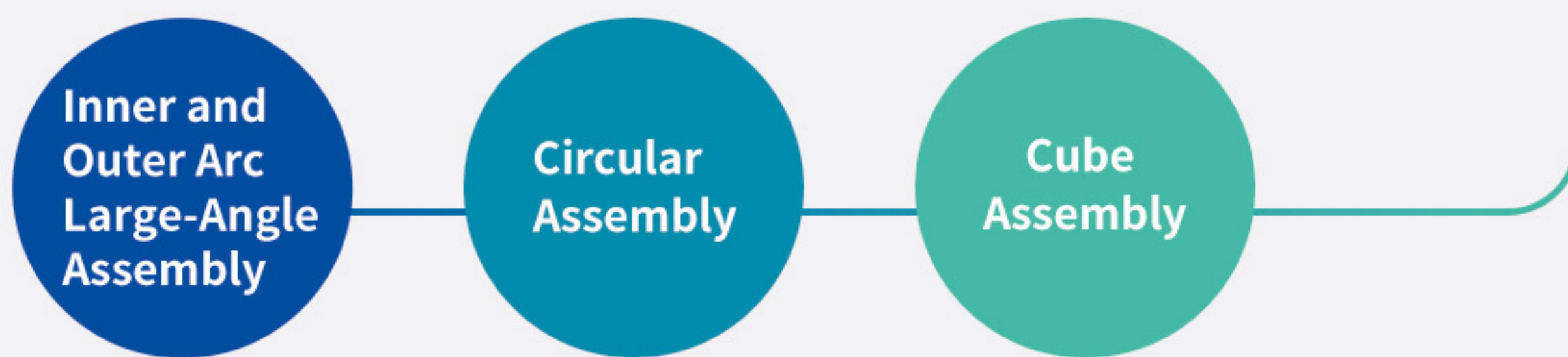


Inspur Rental LED Screen

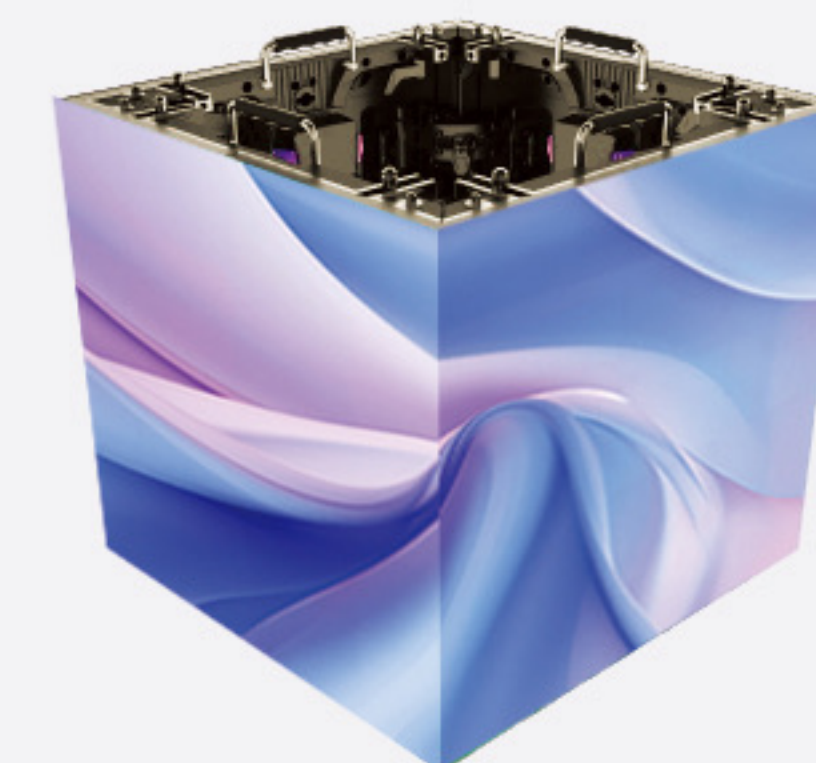
- Various Curves for Creative Configurations
Optional Boxes for Flexible Combinations



Optional 45° beveled box and flexible box
Compatible with flat, right-angle, and curved designs






Large-angle curved installation, adjustable between -12.5° and 15°, for flexible configurations with inner and outer arcs to suit various creative setups



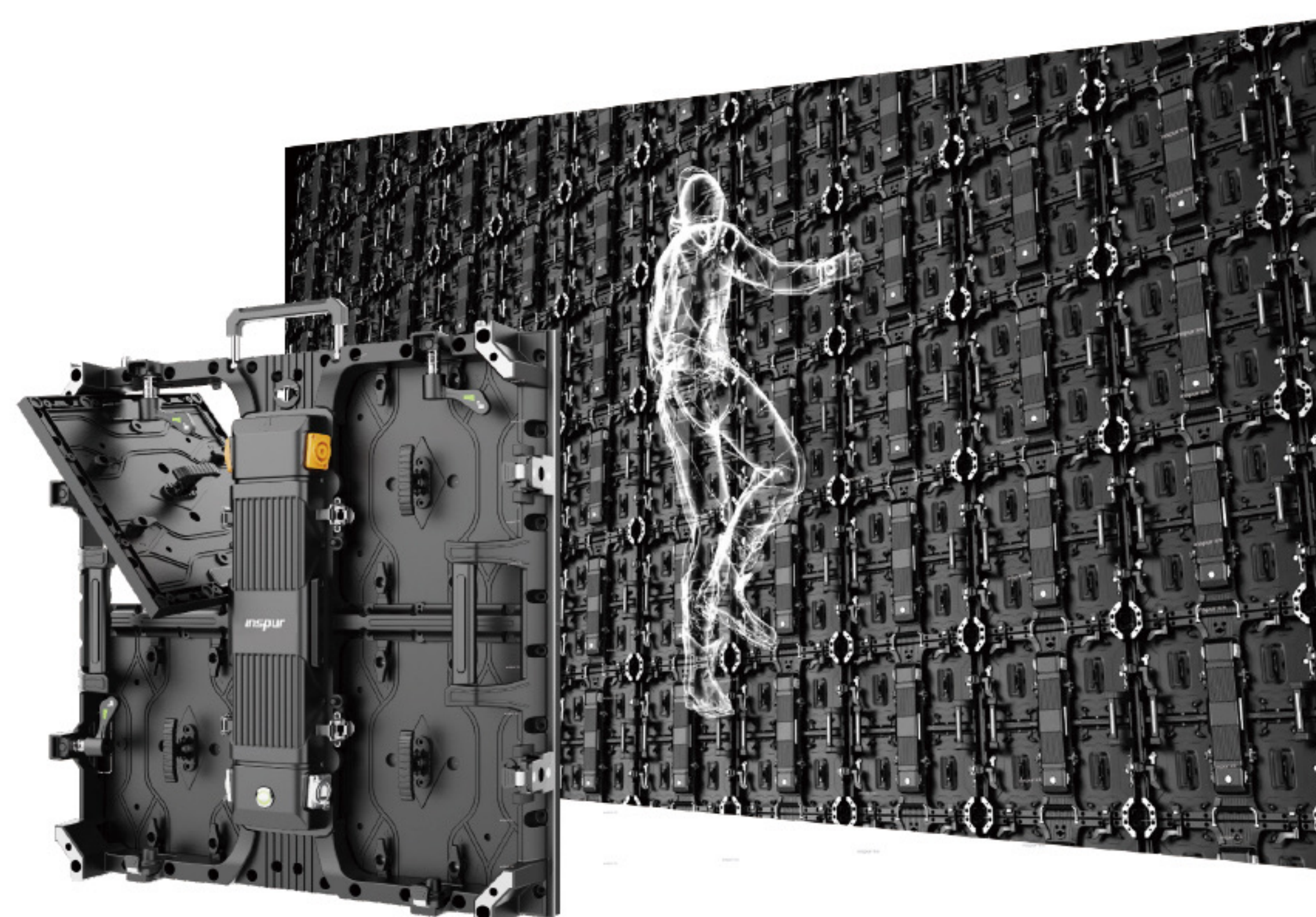
> Edge Protection for Upgraded Impact Resistance



-  Flippable corner protectors minimize impact during transport and handling
-  Protective structure on all four corners further enhances the impact resistance of module LEDs
-  Upgraded LED welding process with quadruple anti-push strength prevents edge impact

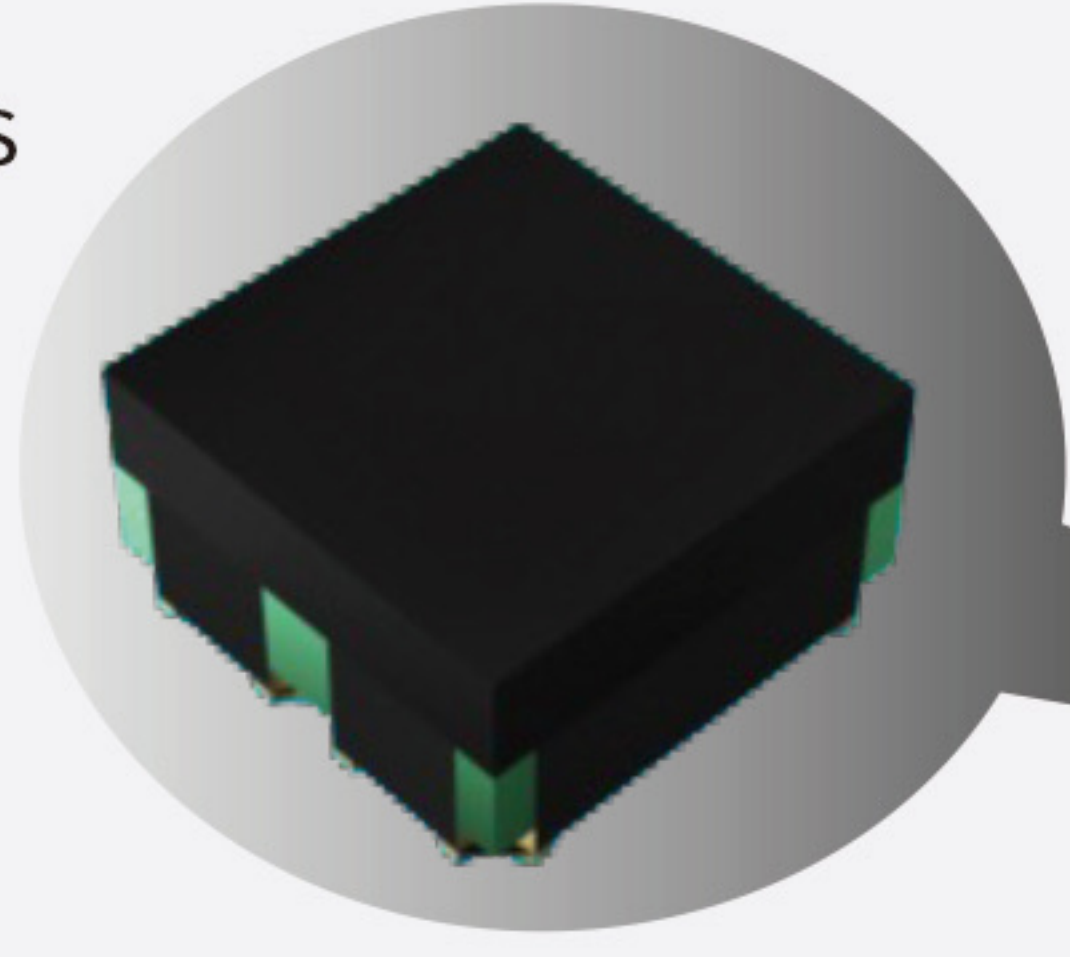
> Front and Rear Maintenance for Easy Replacement

Magnetic module design supports front and rear maintenance
Integrated control box is detachable for easy maintenance



> High-Quality Components for Stable Performance

Premium LEDs, ICs, and other key components
Outstanding display effects
Long-lasting stability
Less maintenance issues



> Full IP65 Protection Against Wind and Rain

Aviation-grade signal and power connectors
Full waterproof sealing rings, IP65
All-weather use



> Flexible Installation Options

Support for hanging and stacking solutions
Easy handling of various staging requirements

> Application Scenarios



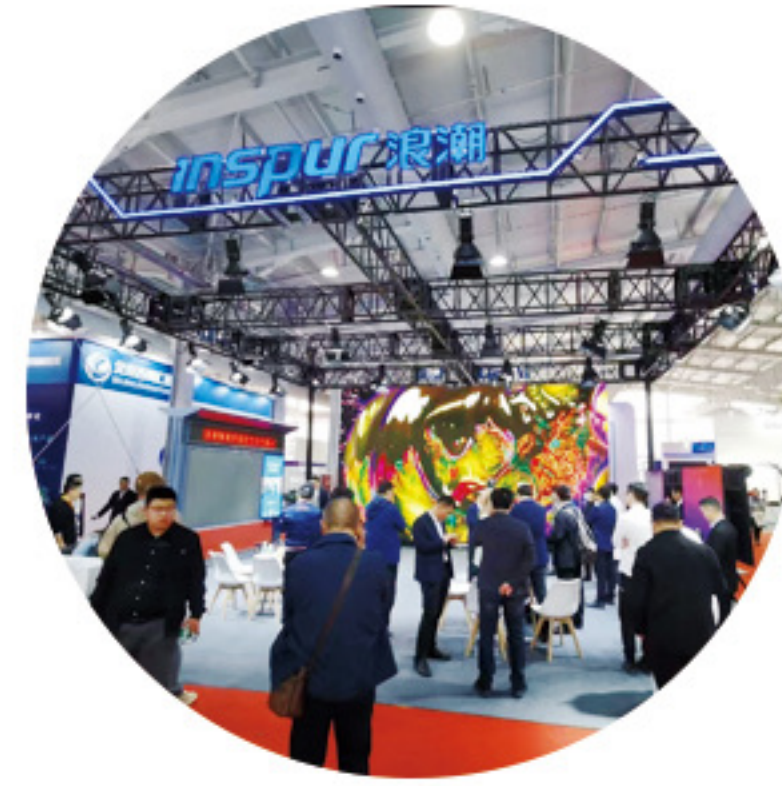
Film Shooting



Immersive Entertainment



Conferences and Forums



Exhibitions



TV Broadcasts



Stage Performances



Product Parameters

Parameters	LC1.9N T	LC2.6NT	LC2.9NT	LC3.9NT	LC2.9WT	LC3.9WT
Pixel Pitch (mm)	1.95	2.604	2.976	3.91	2.976	3.91
Pixel Structure	SMD 3-in-1					
Pixel Density (dot/m ²)	262144	147456	112896	65536	112896	65536
Cabinet Size (mm)	500×500×81.5 (optional 500*1000)					
Cabinet Resolution (W×H)	256×256	192×192	168×168	128×128	168×168	128×128
Unit Weight (kg)	6.5(12)					
Cabinet Material	Die-cast aluminum					
Radian	-12.5°~15°, Adjustment in 2.5°					
Brightness (cd/m ²)	≥800				≥4500	
Contrast Ratio	5000:1					
Viewing Angle (H/V)	160°/ 160°					
Scan Count	1/32S	1/24S	1/28S	1/16S	1/14S	1/8S
Refresh Rate	3840 ~ 7680Hz					
Maintenance Method	Front and Rear Maintenance					
Level of Protection	IP30				IP65	
Peak Power	≤500				≤580	
Average Power Consumption (W/m ²)	≤160				≤190	
Power Supply Requirements	AC 100-240V (50/60Hz)					
Typical Lifespan (h)	≥100000					
Operating Temperature/Humidity Range	-10°C-45°C / 10%-80%RH(non-condensing)				-10°C-50°C / 10%-90%RH(non-condensing)	
Storage Temperature/ Humidity Range	-20°C-55°C/ 10%-85%RH(non-condensing)				-20°C-55°C/ 10%-95%RH(non-condensing)	

Note: The above parameters are for reference only and are not the basis for final delivery. The product can be customized according to requirements

INSPUR INTELLIGENT TECHNOLOGY CO., LTD.

Website: <https://en.inspur.com>

Official Email: IITOS@inspur.com

Address: No. 1036, Langchao Road, Gaoxin District, Ji'nan City, Shandong Province



Scan the Code
to Learn More



Tik Tok
Official Account